

# GLOBAL SOURCE PLASTIC FACTORY L.L.C

## ► G-FIX Four Legged Spacer

Four legged spacers are modified chair spacers made of plastic used for precast and on site concrete applications. These spacers are tough and are designed for both vertical and horizontal reinforcement.



Type	Concrete Cover	For Steel Dia
PS 20	20 mm	6 - 20 mm Ø
PS 30	30 mm	6 - 20 mm Ø
PS 40	40 mm	6 - 20 mm Ø
PS 50	50 mm	6 - 20 mm Ø
PS 60	60 mm	6 - 20 mm Ø

## ► G-FIX Plastic Chamfer

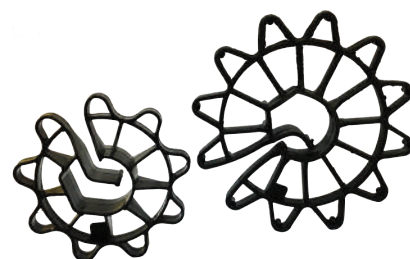
The Plastic Corner Chamfer are widely used to form chamfered edge and angled groove lines, various area such as Column, Canopy, Rain water drip line and also for Concrete Piles construction.



## ► G-FIX Wheel Spacer

The Wheel Spacer has been designed as a strong and lightweight reinforcement spacer for vertical precast concrete construction. Locking hub keeps wheels in place during placement of steel or pouring of concrete, and provides minimal contact with form. Designed to allow unimpeded concrete flow through the spokes and with small contact members to assure the minimum contact to the formwork and assure a maximum load capacity.

Description	Cover (mm)	Ø SteelBar (mm)	Packing (pcs)
Wheel 20	20	6 - 20	1000
Wheel 25	25	6 - 20	1000
Wheel 30	30	6 - 20	1000
Wheel 40	40	6 - 20	500
Wheel 50	50	6 - 20	250
Wheel 75	75	6 - 20	125
Wheel 100	100	6 - 20	125



## ► G-FIX Chair Spacer

The Chair Spacer offer support for many different steel sizes. This spacer is the most popular spacer for horizontally placed reinforcement in slabs and beams. It has good stability and can be used with bars of various diameters due to its concave seat. Designed for light reinforcement in slabs and beams.

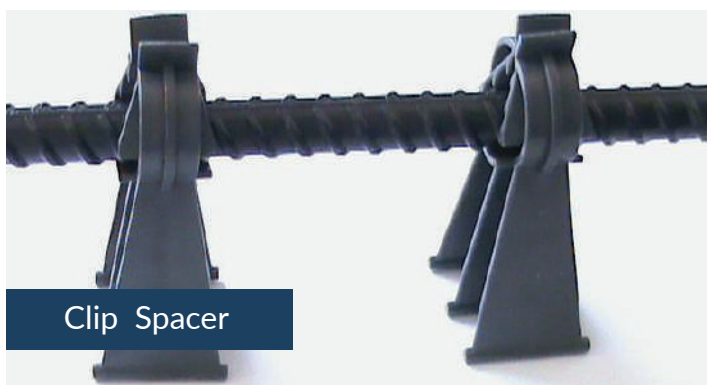
Description	Cover (mm)	Ø SteelBar (mm)	Packing (pcs)
Chair 20	20	All Sizes	2000
Chair 25	25	All Sizes	2000
Chair 30	30	All Sizes	2000
Chair 40	40	All Sizes	1000
Chair 50	50	All Sizes	1000



## ► G-FIX Clip Spacer

A Clip Spacer is a very strong plastic, designed for supporting a minimum load of 100 kg according to German performance class L2 (1KN) each and for bar diameters from 6m/m to 32m/m. The clip spacer can be used for various applications in horizontal positions in pre-cast or in situ concrete.

Description	Cover (mm)	Ø SteelBar (mm)	Packing (pcs)
Clip 20	20	6 - 32	2000
Clip 25	25	6 - 32	2000
Clip 30	30	6 - 32	2000
Clip 40	40	6 - 32	1000
Clip 50	50	6 - 32	1000
Clip 75	75	6 - 32	500



Clip Spacer



Chair Spacer



## ► G-FIX Shim Pads

Shim pads are polymer pads catered to the precast industry where it is used to align heavy precast concrete sections and also as a medium to avoid concrete to concrete connections at joints of the structure, they are also used to align heavy steel sections. The shim pads are designed to withstand high loads without distortion or breakage.

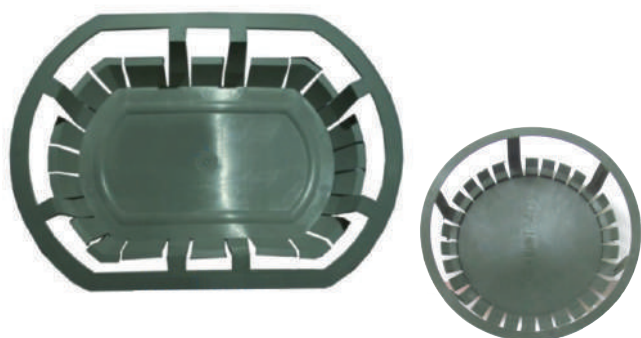
The shim pads aid the installation of various structural or architectural members and are available in size of,

SizeArea	(mm2)	Thickness (mm)
GS 17	70 X 70	2
GS 18	70 X 70	3
GS 19	70 X 70	5
GS 20	70 X 70	10



## ► G-FIX Hollow Core Plugs

Hollow core end caps are grout stoppers placed at the slab ends to prevent the pouring of mixture into the cores during grouting the slabs.



Sl no.	Ref	Slab Size (mm)
1	GH 1	150
2	GH 2	200
3	GH 3	265
4	GH 4	320
5	GH 5	400
6	GH 6	500

## ► G-FIX Mushroom Cap

Mushroom Caps are used on horizontal steel re-bars at construction sites in order to protect any falling person from any injury that may arise from the exposed Re-bars. These caps are reusable.



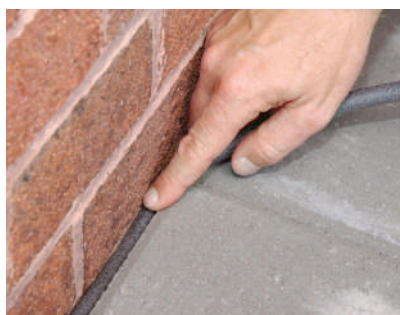
## ► G-FIX Backup Rods

Backup rods are the flexible, readily compressible, open-cell polyurethane backup strip for silicone sealants. These materials are used to achieve correct depth of the sealant and act as a bond breaker, avoiding adhesive sealant to the bottom of the joint. It cures under the influence of atmospheric moisture to form an elastomeric material with adhesive properties, in some cases without the need for priming of the substrate.

### Features of PU Rod

- Excellent resistance to wear.
- A wide range of hardness(10A-73D).
- Operating temperature range is from -40°C to 80°C.
- Good tear resistance and high flexural strength.
- Good flexibility and a small range of deformation after a long-term compression. Particularly good resistance to age.

Diameter (mm)	Packing in mtrs (packed as bundles)
05	800
10	800
15	360
20	200
25	100
25	100
30	100
35	100
40	100
50	75



### Uses

**An elastic joint sealant on cement based substrates such as:**

- Expansion joints in buildings and civil structures above and below ground.
- Joints in precast concrete elements, such as facades and tilt-up panels.
- External walling and cladding joints.
- Curtain walling.
- Retaining walls.



### ► G-FIX Plastic Welding Rod

A plastic welding rod, also known as a thermoplastic welding rod, is a rod with circular or triangular cross-section used to bind two pieces of plastic together. They are available in a wide range of colors to match the base material's color.

Types of plastic welding rods include ABS, FEP, LDPE, PP, HDPE, PETg, PVDF, PFA, PVC & PU welding rods.



### ► G-WELD Plastic Welding Strips

Plastic welding strips are supplied in HDPE and PVC material based on the client's requirement. The strip comes in a standard width of 10cms and 15 meters length. It is used to join / fill spaces between the liners to make the plastic insulation 100% inside the element - Manhole, Culvert etc. The installation is done either by Hot Air Welding or Extrusion welding. For hot air welding, you would need a hot air blower, a One Arm Pressure Roller and a Quarter Moon Knife. For Extrusion Welding, an extrusion welder will be sufficient. Also refer to the plastic welding tools section to learn more about these tools for installation of plastic strips.



### ► G-SAFE Safety Helmet

GSAFE Safety Helmets absorb much of the force of impact, during a fall or crash that would otherwise be directed to the head. In certain models, thick plastic foam (firm polystyrene) inside the hard outer shell of a helmet provides protection that cushions the blow. Global Source can offer helmets with your company logo printed on special non-removable stickers. Kindly get in touch with us to know more.





## ► G-FIX Adhesive Anchor

Stepone is a two-component, high strength adhesive anchoring system. The system includes injection adhesive in plastic cartridges, mixing nozzles, dispensing tools and hole cleaning equipment.

### Features & Benefits:

- Has high strength structural adhesive force.
- Is easy to apply, the static mix nozzle delivers a uniform mixture every time. Thus, eliminating the need to mix resin and hardener on site reducing wastage.
- Has good chemical resistance, and is non-toxic.
- Is colored, which allows for easy detection or monitoring.
- Has a longer working time, styrene free and odorless.



## ► G-RUNGS PE Coated Manhole Steps

Step rungs are produced by plastic coating ( either PE or PPCP water and impact resistant reinforced plastic ) on metal bars of optional sizes and grades like corrugated steel, stainless steel, aluminium bars and pipes. They are used and preferred in waste water removal system, pools, manholes, etc. due to their easy assembling and corrosion and impact resistance.

We offer the highest quality of manhole rungs [ ladder steps ] of various metals like stainless steel, aluminium and galvanized steel or any other metal, as per demand. These steps are exported the world over and are known for their superior quality and custom made designs.

Our objective on all sourcing initiatives is to help our clients obtain the best overall total-cost and quality of service with existing or new suppliers.

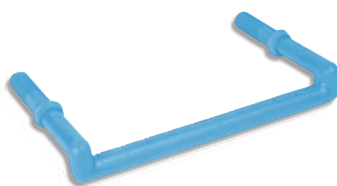


PE Coated Manhole Steps

## A TYPE - APPLICATION STANDARD - DIN 19555 TEST METHOD ACCORDING TO ASTM C 497



ST SS 014



ST AL 016



ST GS 018

## B TYPE - APPLICATION STANDARD - DIN 19555 TEST METHOD ACCORDING TO ASTM C 497



ST SS 029



ST GS 030



ST AL 031

## HAND BAR - TEST METHOD ACCORDING TO ASTM C 497



HB SS 015

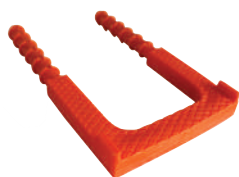


HB AL 017

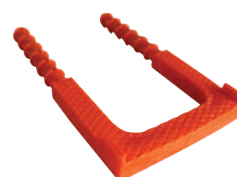


HB GS 019

## SINGLE STEP - APPLICATION STANDARD - DIN EN 13101 TEST METHOD ACCORDING TO ASTM C 497



ST MS 027



ST GS 028

## HAND BAR - TEST METHOD ACCORDING TO ASTM C 497



HB SS 019B



HB GS 019B



## **Global Source Plastic Factory L.L.C**

New Industrial Area, Umm Al Quwain,  
United Arab Emirates



+971 4 255 2005



+971 4 255 2006



info@gspfae.com | [www.gspfae.com](http://www.gspfae.com)